

# On The Disk...

*A run-down of what's included on the free disk with this issue*

*Collated and tested by Mike Orriss*

Each month, subscribers to The Delphi Magazine receive a *free* companion disk packed with goodies. This includes the source code and example files for all the articles in the current issue.

But, there's much more too! The headings are the directory names where you will find the files on the floppy disk.

## ➤ TDMAID

This month we've included the latest versions of the program and data files for TDMAid, our article index database. Both 16-bit and 32-bit versions of the program are included, and the data files are completely up to date, *including* the articles from *this* issue.

Whilst we post new program and data versions on our web site, we recognise that not all our readers are yet 'wired'; if that includes you, this is your chance to see what you've been missing!

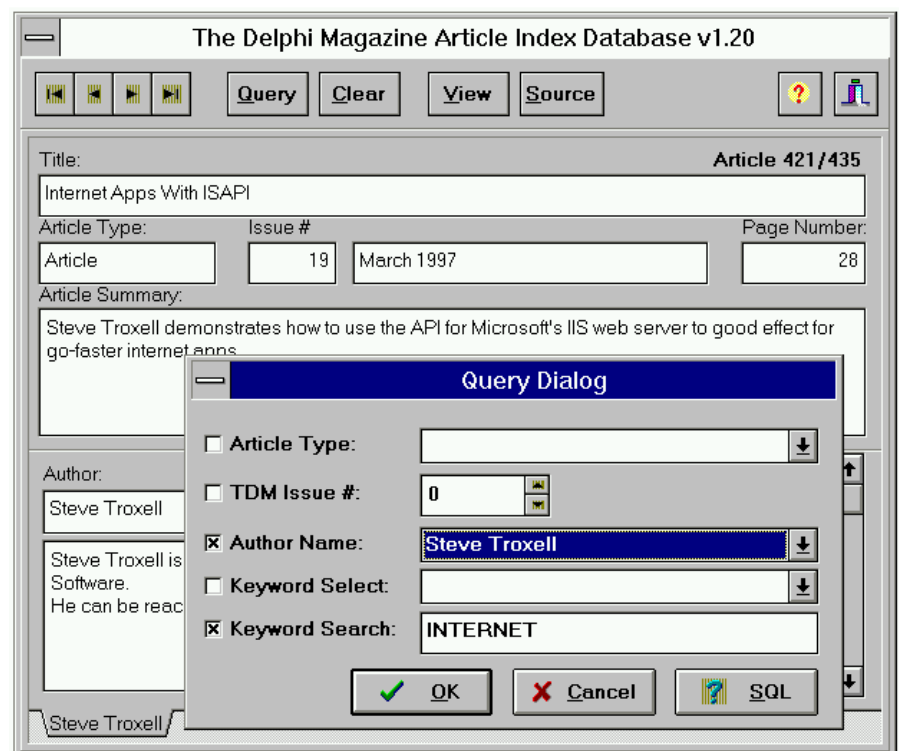
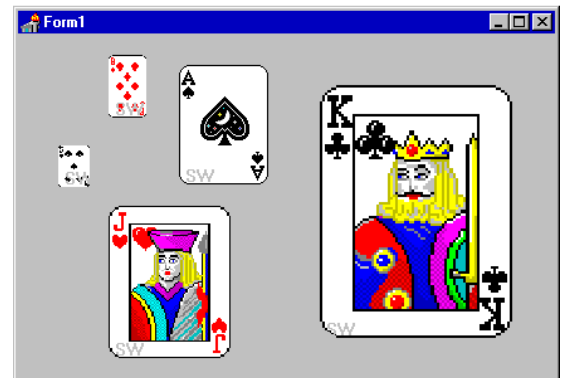
## ➤ CARDS

The TFXCards component has been designed to be used in the development of card games. TFXCards is not just another card component, it has built-in special effects to give your games that "little something extra." For example, instead of instantly changing a card's value from, say, the ten-of-spades to the jack-of-hearts, wouldn't it be cooler to flip the card image, or perhaps fade one into another! TFXCards has several built-in methods to do these things for you. But that's not all, it has several other effects, like color inversion, animated translation and built-in sound. It has Standard and Custom deck styles. The Custom deck, and over 14 card back images, are all new, never before seen, artwork that will set your games apart from all the rest.

## ➤ INTERNET

Listing of Delphi-related World Wide Web and ftp sites.

## ➤ TFXCards in action



## ➤ TDMAid, showing the query facilities which make it easy to find the articles, Tips and Clinic items covering the topics you need!

## ➤ USERGPS

List and contact information for Delphi User Groups (don't forget to send us details of *your* group!).

## Important Note!

Always, but *always* make a backup copy of your component library file *before* you take the plunge and install *any* new component into Delphi! Sometimes component installation can trash your component library and you will then be

left with an inoperative Delphi will have to re-add *all* your extra components.

## Send In Your Code...

If you have some carefully crafted routines, why not send them in for evaluation by mail or (zipped up) by CompuServe email to our Disk Editor, Mike Orriss, on 100570,121. We do consider *all* submitted files for use on future disks.